

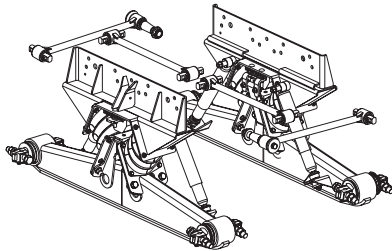
PARTS LIST

HN® Series

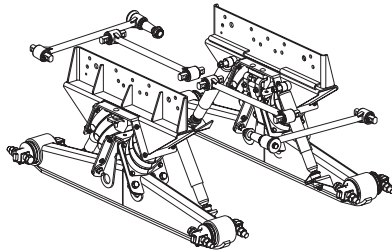
LIT NO: SP-212

DATE: December 2004

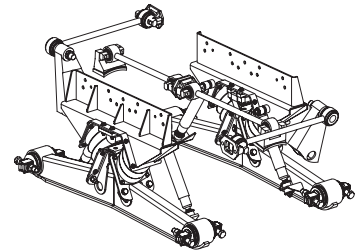
REVISION: B



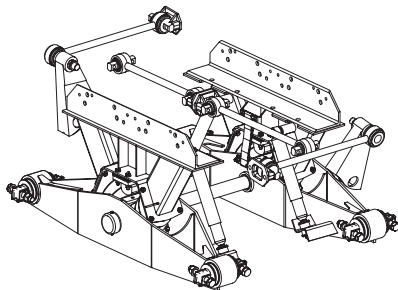
HN-402/462/522
11/00-current
Page 2



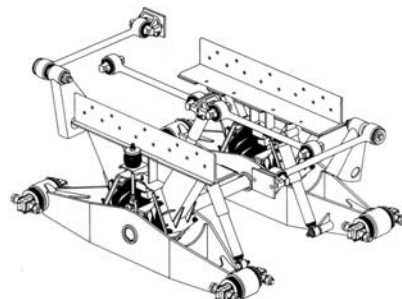
HN-402/462/522
9/98-11/00
Page 4



HN-402/462/522
4/96-8/98
Page 6



HN-400/460
3/96-9/97
Page 8

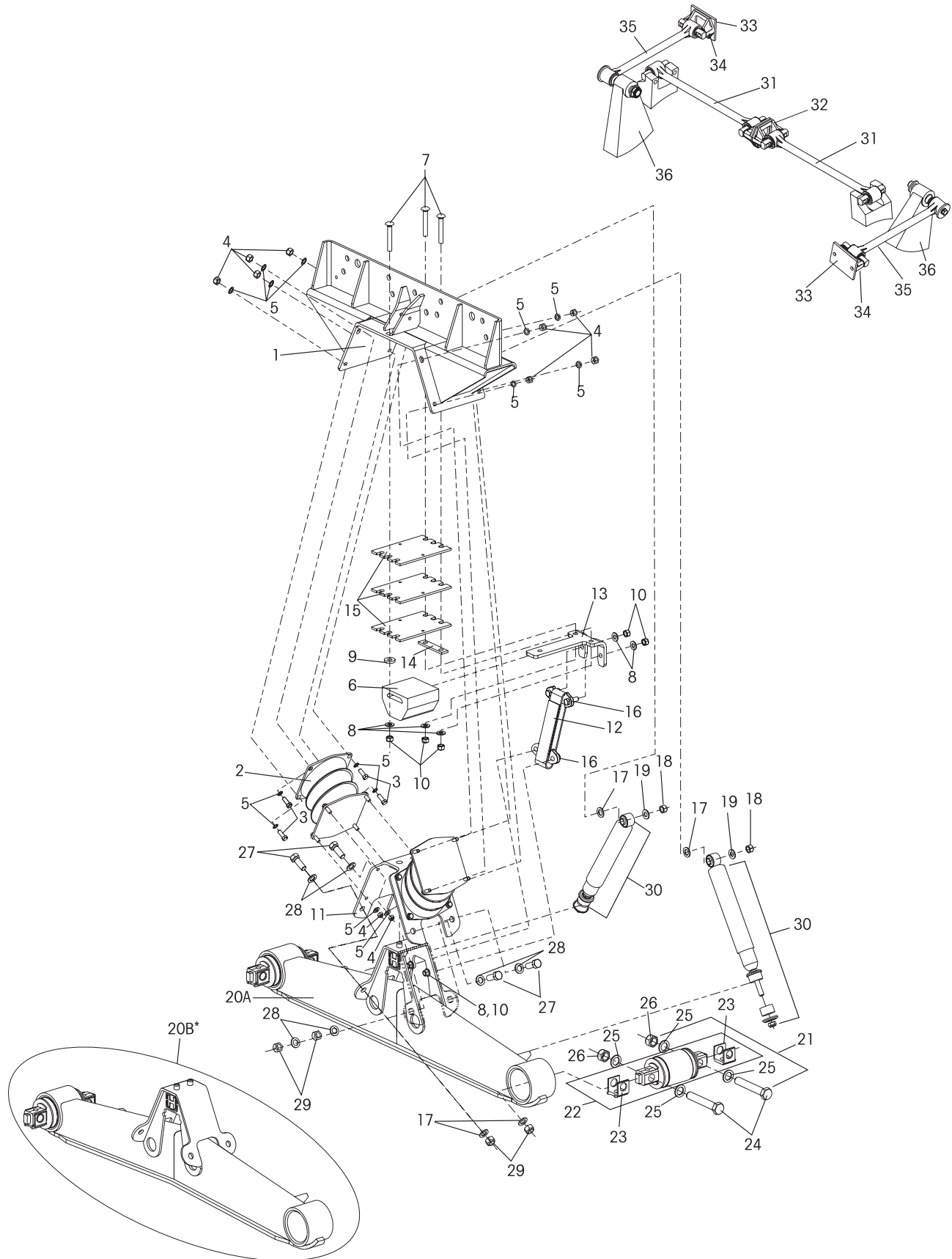


HN-400/460
11/88-2/96
Page 10

For The Road Ahead™

 **HENDRICKSON**

After 11/00 to current





KEY NO.	PART NO.	DESCRIPTION	NO.REQ.
1		HN-402/462 Saddle Assembly (Includes Key Nos. 2-19)	2
	60686-	Specify Truck Manufacturer and Saddle Height "A" as shown in the illustration below — 16.5", 17.5", or 18.5"	
	58650-	Specify Truck Manufacturer and Saddle Height "A" as shown in the illustration below — 20.25" or 22.50"	
2	60879-000L	Bolster Spring Kit (2 pc)	2
3	25114-011	7/16"-20-1.25" Bolt	32
4	48949-000	7/16"-20 UNF-2B Locknut	32
5	22962-027	7/16" Washer	64
6	60314-000	Auxiliary Spring Assembly	2
7	58196-005	1/2"-13 UNC-2A Round Head Square Neck Bolt 3.25"	6
8	22962-011	1/2" Washer	6
9	22962-020	1/2" Washer	2
10	49846-000	1/2"-13 UNC-2A Locknut	6
11	58343-001	Saddle Vee Bracket	2
12	57878-003	Rebound Strap	2
13	58948-001	Rebound Strap Mounting Plate	2
14	58949-000	Auxiliary Spring Mounting Plate Shim	2
15	58960-003	Auxiliary Spring Mounting Shim	2
16	60639-000	Anchor Plate Assembly	4
17	22962-001	3/4" Washer	4
18	30585-000	5/8" Locknut	4
19	22962-004	5/8" Washer	4
20A		Equalizing Beam Assembly	2
	58494-001	HN-462, 54" Non-Shim Type	
	58494-002	HN-462, 54" Shim Type	
	58494-005	HN-402/462, 60" Non-Shim Type	
	58494-006	HN-402/462, 60" Shim Type	
	58494-009	HN-402/462, 72.5" Non-Shim Type	
	58494-010	HN-402/462, 72.5" Shim Type	
	59973-003	HN-522, 54" Shim Type	
20B		*Equalizing Beam Assembly	2
	57889-004	HN-402, 52" Non-Shim Type	
	57889-005	HN-402, 52" Shim Type	
	57889-001	HN-402, 54" Non-Shim Type	
	57889-002	HN-402, 54" Shim Type	

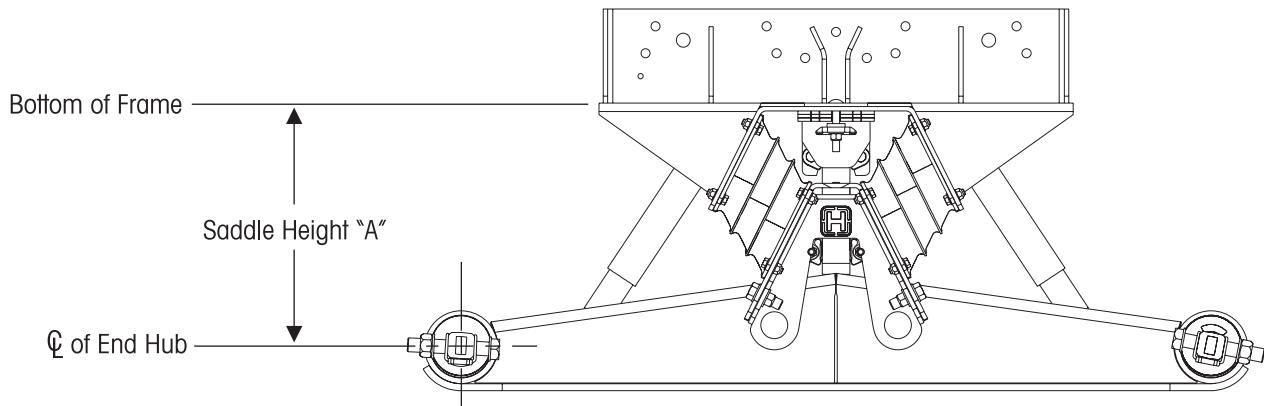
KEY NO.	PART NO.	DESCRIPTION	NO.REQ.
21	34013-088L	Bar Pin Bushing Kit , Shim Type (Includes Key Nos. 22-26)	4
22	- -	**Bar Pin End Bushing	4
23		Bar Pin Shim	8
	50130-000	.19 / .19	
	50131-000	.25 / .12	
24	48941-000	1"-8 UNC 6" Hexbolt	4
25	22962-008	1" Hardened Washer	8
26	48942-000	1"-8 UNC Locknut	4
	58440-001	Vee Plate Fastener Kit (Includes Key Nos. 27-29)	1
27	50764-006	3/4"-10 UNC-2A Hex Head Bolt	8
28	22962-001	3/4" Washer	16
29	49842-000	3/4"-10 UNC-2B Locknut	8
30	60680-003	Shock Absorber	4
31	60218-000	***Torque Rod Assembly	2
32	22186-000	Torque Rod Frame Bracket	2
	42518-	Transverse Rod Assembly Kit (Includes Key Nos. 33-36)	1
33	45045-003	Backup Plate	2
34	22186-000	Transverse Rod Frame Bracket	2
35	60215-000	Transverse Torque Rod	2
36		Transverse Rod Axle Bracket, See 59310-004 for proper axle bracket and Assembly Instructions.	2

NOTE: Brackets for drive axles are supplied by the axle manufacturer.

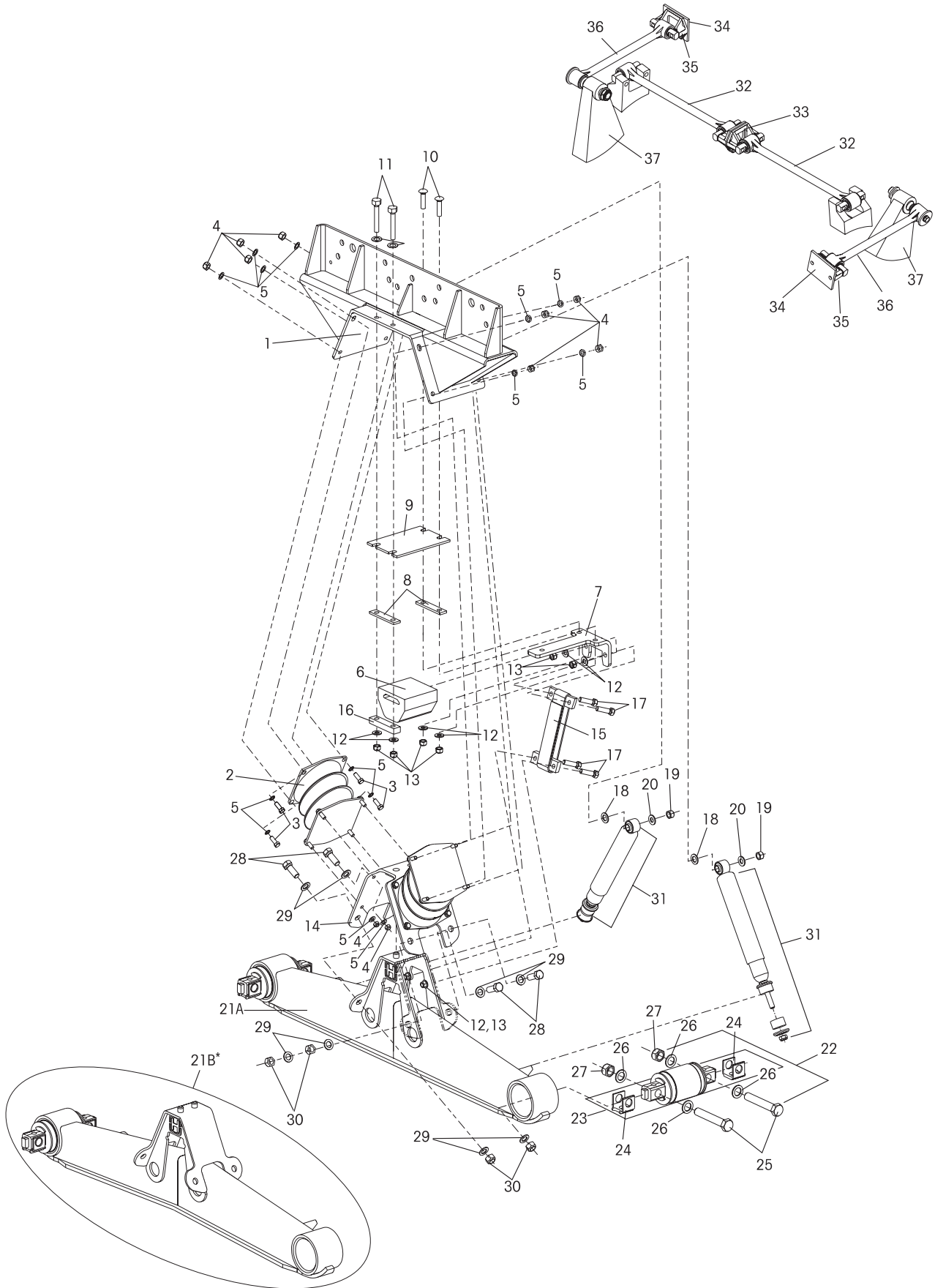
* The inset shows the difference between the HN-462 and the HN-402 equalizing beam. Notice the bottom flange of the HN-462 is straight and the bottom flange of the HN-402 is formed.

** Item included in assembly only, part not sold separately.

*** Hendrickson's part number is stamped on the rod for identification. Be sure and include suffix number when ordering (this number indicates rod length). Hendrickson 2-piece ULTRA RODS® can be used to create the desired length. See literature number 45745-149.



After 9/98 to 11/00





KEY NO.	PART NO.	DESCRIPTION	NO.REQ.
1		HN-402/462 Saddle Assembly (Includes Key Nos. 2-20)	2
	60686-	Specify Truck Manufacturer and Saddle Height "A" as shown in the illustration below — 16.5", 17.5", or 18.5"	
	58650-	Specify Truck Manufacturer and Saddle Height "A" as shown in the illustration below — 20.25" or 22.50"	
2	60879-000L	Bolster Spring Kit (2 pc)	2
3	25114-011	7/16"-20-1.25" Bolt	32
4	48949-000	7/16"-20 UNF-2B Locknut	32
5	22962-027	7/16" Washer	64
6	58947-000	Auxiliary Spring Assembly	2
7	58948-000	Mounting Plate	2
8	58949-000	Mounting Plate Shim	4
9	58960-001	Mounting Shim	2
10	58196-004	1/2"-13 UNC-2.25" RD HD Bolt	4
11	24531-016	1/2"-13 UNC- 3.50" Bolt	4
12	22962-011	1/2" Washer	12
13	49846-000	1/2"-13 UNC-2A Locknut	8
14	58343-000	Saddle Vee Bracket	2
15	57878-003	Rebound Strap	2
16	58524-000	Mounting Plate	2
17	59779-000	Anchor Plate Assembly	4
18	22962-001	3/4" Washer	4
19	30585-000	5/8" Locknut	4
20	22962-004	5/8" Washer	4
21A		Equalizing Beam Assembly	2
	58494-001	HN-462, 54" Non-Shim Type	
	58494-002	HN-462, 54" Shim Type	
	58494-005	HN-402/462, 60" Non-Shim Type	
	58494-006	HN-402/462, 60" Shim Type	
	58494-009	HN-402/462, 72.5" Non-Shim Type	
	58494-010	HN-402/462, 72.5" Shim Type	
	59973-003	HN-522, 54" Shim Type	
21B		*Equalizing Beam Assembly	2
	57889-004	HN-402, 52" Non-Shim Type	
	57889-005	HN-402, 52" Shim Type	
	57889-001	HN-402/462, 54" Non-Shim Type	
	57889-002	HN-402/462, 54" Shim Type	

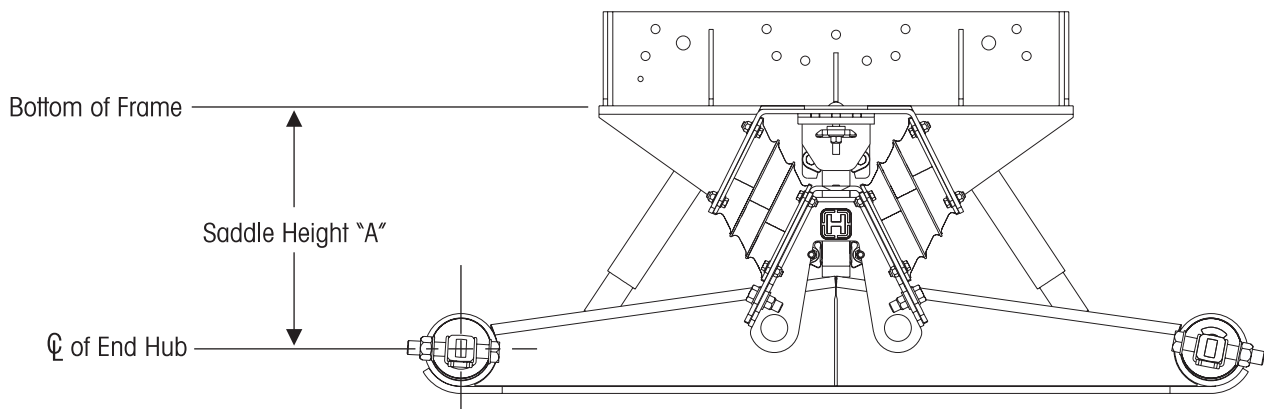
KEY NO.	PART NO.	DESCRIPTION	NO.REQ.
22	34013-088L	Bar Pin Bushing Kit , Shim Type (Includes Key Nos. 23-27)	4
23	- -	**Bar Pin End Bushing	4
24		Bar Pin Shim	8
	50130-000	.19 / .19	
	50131-000	.25/.12	
25	48941-000	1"-8 UNC 6" Hexbolt	4
26	22962-008	1" Hardened Washer	8
27	48942-000	1"-8 UNC Locknut	4
	58440-001	Vee Plate Fastener Kit (Includes Key Nos. 28-30)	1
28	50764-006	3/4"-10 UNC-2A Hex Head Bolt	8
29	22962-001	3/4" Washer	16
30	49842-000	3/4"-10 UNC-2B Locknut	8
31	60680-003	Shock Absorber	4
32	60218-000	***Torque Rod Assembly	2
33	22186-000	Torque Rod Frame Bracket	2
	42518-	Transverse Rod Assembly Kit (Includes Key Nos. 34-37)	1
34	45045-003	Backup Plate	2
35	22186-000	Transverse Rod Frame Bracket	2
36	60215-000	Transverse Torque Rod	2
37		Transverse Rod Axle Bracket, See 59310-004 for proper axle bracket and Assembly Instructions.	2

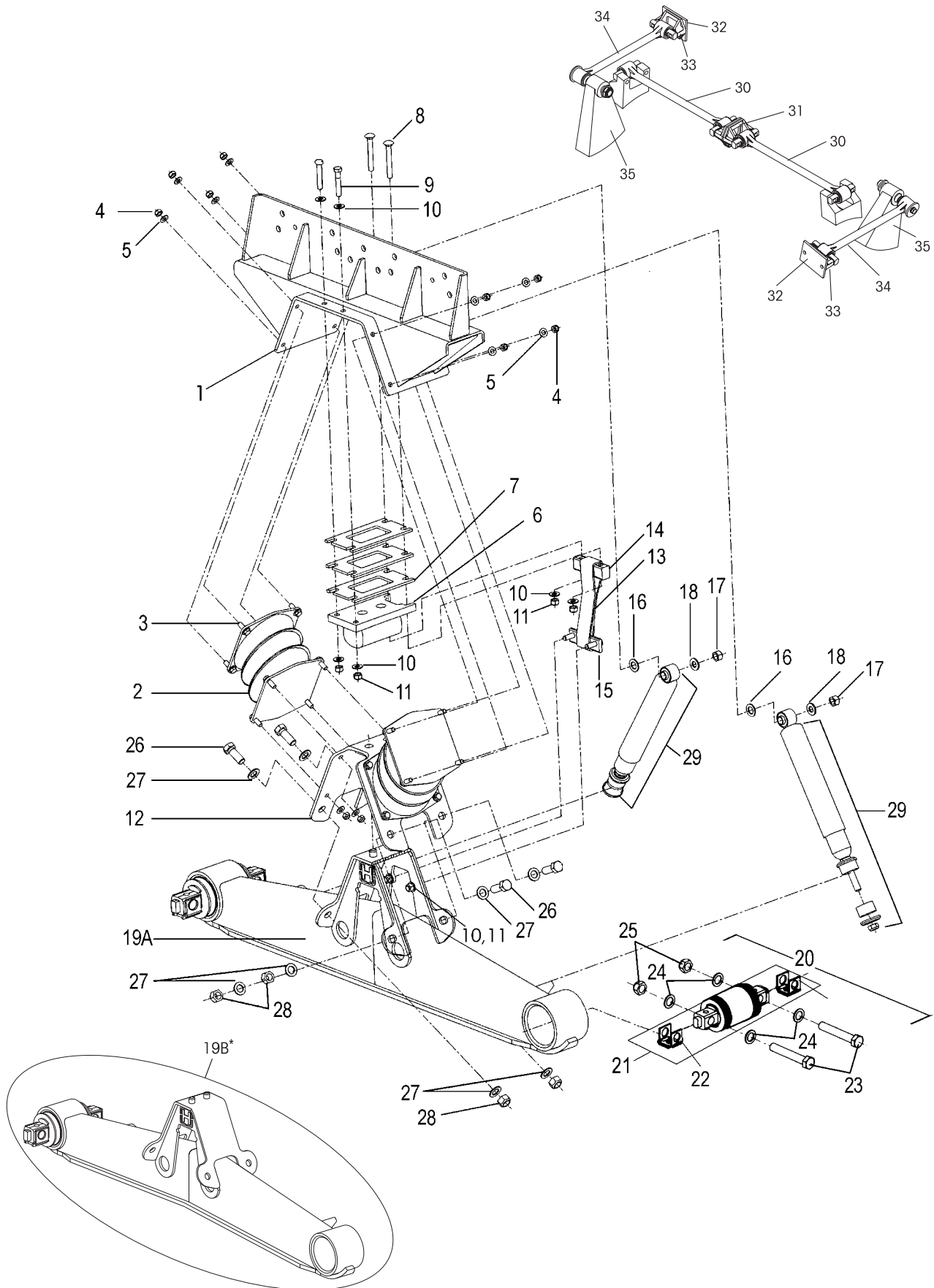
NOTE: Brackets for drive axles are supplied by axle manufacturer.

* The inset shows the difference between the HN-462 and the HN-402 equalizing beam. Notice the bottom flange of the HN-462 is straight and the bottom flange of the HN-402 is formed.

** Item included in assembly only, part not sold separately.

*** Hendrickson's part number is stamped on the rod for identification. Be sure and include suffix number when ordering (this number indicates rod length). Hendrickson 2-piece ULTRA RODS can also be used to create the desired length. See literature number 45745-149.







KEY NO.	PART NO.	DESCRIPTION	NO.REQ.
1		HN-402/462 Saddle Assembly (Includes Key Nos. 2-18)	2
	60686-	Specify Truck Manufacturer and Saddle Height "A" as shown in the illustration below — 16.5", 17.5", or 18.5"	
	58650-	Specify Truck Manufacturer and Saddle Height "A" as shown in the illustration below — 20.25" or 22.50"	
2	60879-000L	Bolster Spring	2
3	25114-011	7/16"-20-1.25" Bolt	32
4	48949-000	7/16"-20 UNF-2B Locknut	32
5	22962-027	7/16" Washer	64
6	58189-000	Auxiliary Spring Assembly	2
7	57993-002	Spacer Plate	6
8	58196-002	1/2"-13 UNC-2A Round Head Square Neck Bolt	4
9	24531-017	1/2"-13 UNC-2A Hex Head Bolt	4
10	22962-011	1/2" Washer	16
11	49846-000	1/2"-13 UNC-2A Locknut	12
12	58343-001	Saddle Vee Bracket	2
13	57878-003	Rebound Strap	2
14	58524-000	Rebound Strap Mounting Plate	2
15	58376-000	Anchor Plate Assembly	2
16	22962-001	3/4" Washer	4
17	30585-000	5/8" Locknut	4
18	22962-004	5/8" Washer	4
19A		Equalizing Beam Assembly	2
	58494-001	HN-462, 54" Non-Shim Type	
	58494-002	HN-462, 54" Shim Type	
	58494-005	HN-402/462, 60" Non-Shim Type	
	58494-006	HN-402/462, 60" Shim Type	
	58494-009	HN-402/462, 72.5" Non-Shim Type	
	58494-010	HN-402/462, 72.5" Shim Type	
	59973-003	HN-522, 54" Shim Type	
19B		*Equalizing Beam Assembly	2
	57889-004	HN-402, 52" Non-Shim Type	
	57889-005	HN-402, 52" Shim Type	
	57889-001	HN-402/462, 54" Non-Shim Type	
	57889-002	HN-402/462, 54" Shim Type	

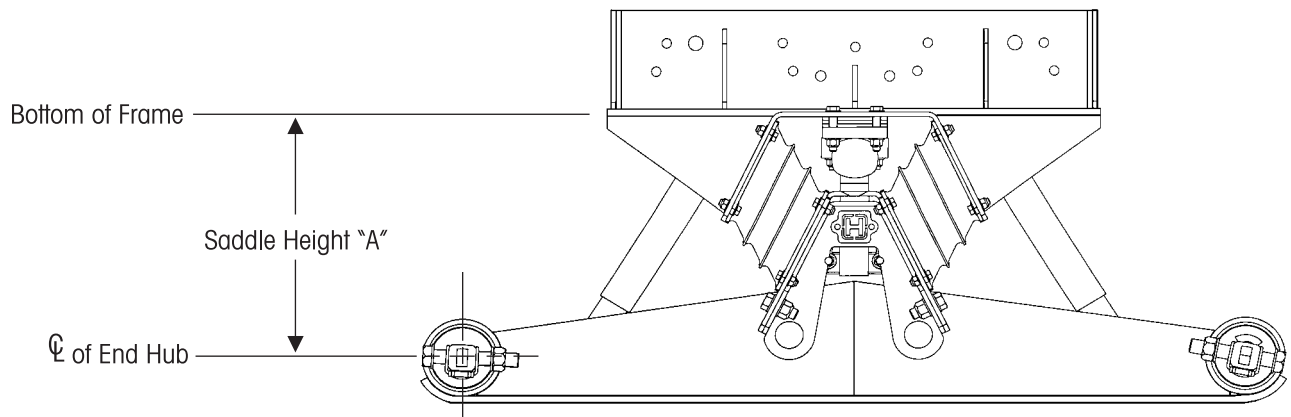
KEY NO.	PART NO.	DESCRIPTION	NO.REQ.
20	34013-088L	Bar Pin Bushing Kit , Shim Type (Includes Key Nos. 21-25)	4
21	- -	**Bar Pin End Bushing	4
22		Bar Pin Shim	8
	50130-000	.19 / .19	
	50131-000	.25 / .12	
23	48941-000	1"-8 UNC 6" Hexbolt	4
24	22962-008	1" Hardened Washer	8
25	48942-000	1"-8 UNC Locknut	4
	58440-001	Vee Plate Fastener Kit (Includes Key Nos. 26-28)	1
26	50764-006	3/4"-10 UNC-2A Hex Head Bolt	8
27	22962-001	3/4" Washer	16
28	49842-000	3/4"-10 UNC-2B Locknut	8
29	60680-003	Shock Absorber	4
30	60218-000	***Torque Rod Assembly	2
31	22186-000	Torque Rod Frame Bracket	2
	42518-	Transverse Rod Assembly Kit (Includes Key Nos. 33-36)	2
32	45045-003	Backup Plate	2
33	22186-000	Transverse Rod Frame Bracket	2
34	60215-000	Transverse Torque Rod	2
35		Transverse Rod Axle Bracket, See 59310-004 for proper axle bracket and Assembly Instructions	2

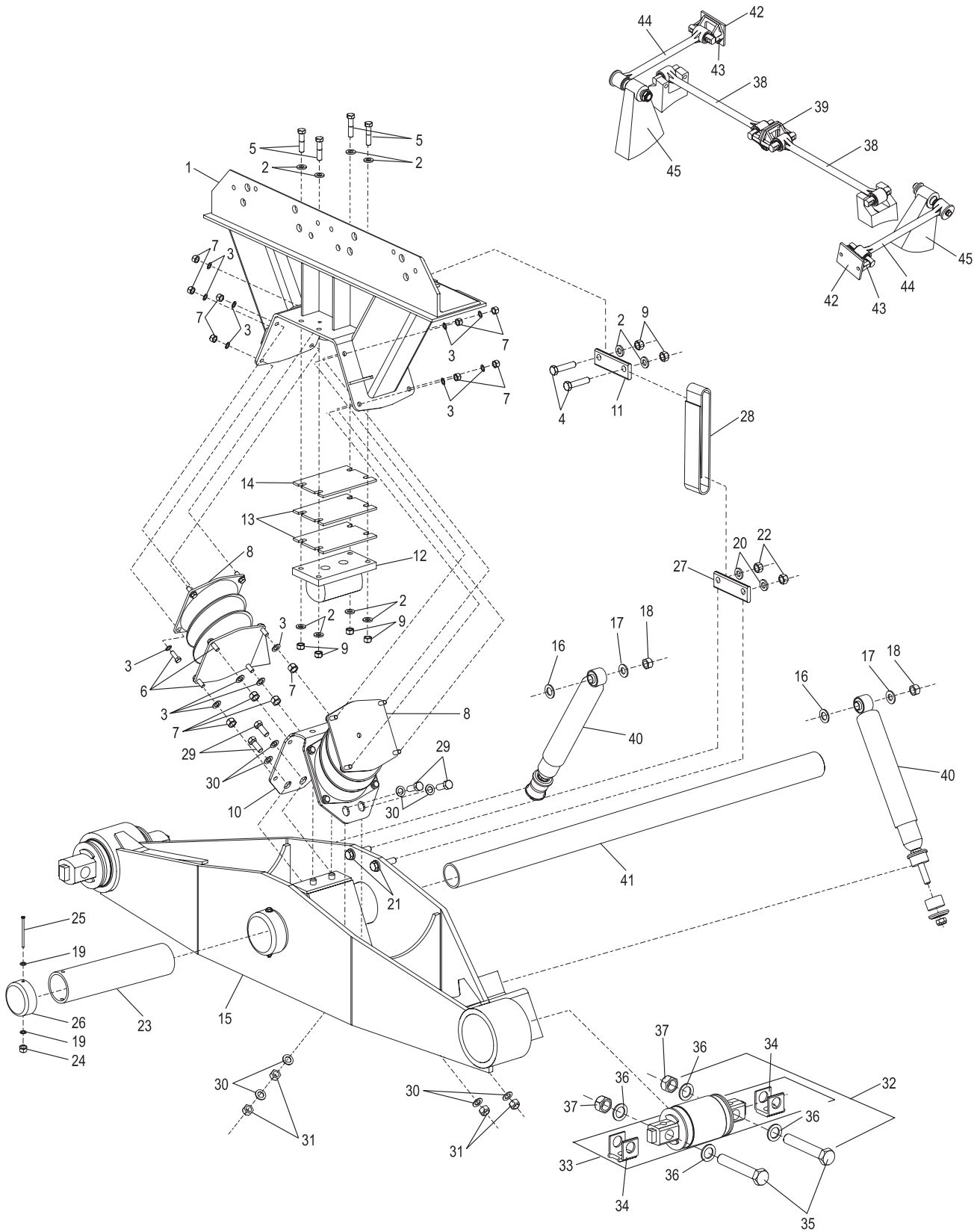
NOTE: Brackets for drive axles are supplied by axle manufacturer.

* The inset shows the difference between the HN-462 and the HN-402 equalizing beam. Notice the bottom flange of the HN-462 is straight and the bottom flange of the HN-402 is formed.

** Item included in assembly only, part not sold separately.

*** Hendrickson's part number is stamped on the rod for identification. Be sure and include suffix number when ordering (this number indicates rod length). Hendrickson 2-piece ULTRA RODS can also be used to create the desired length. See literature number 45745-149.



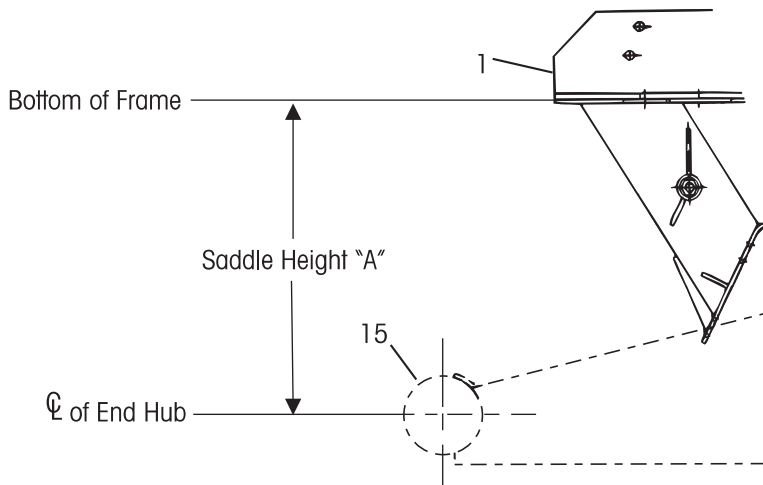




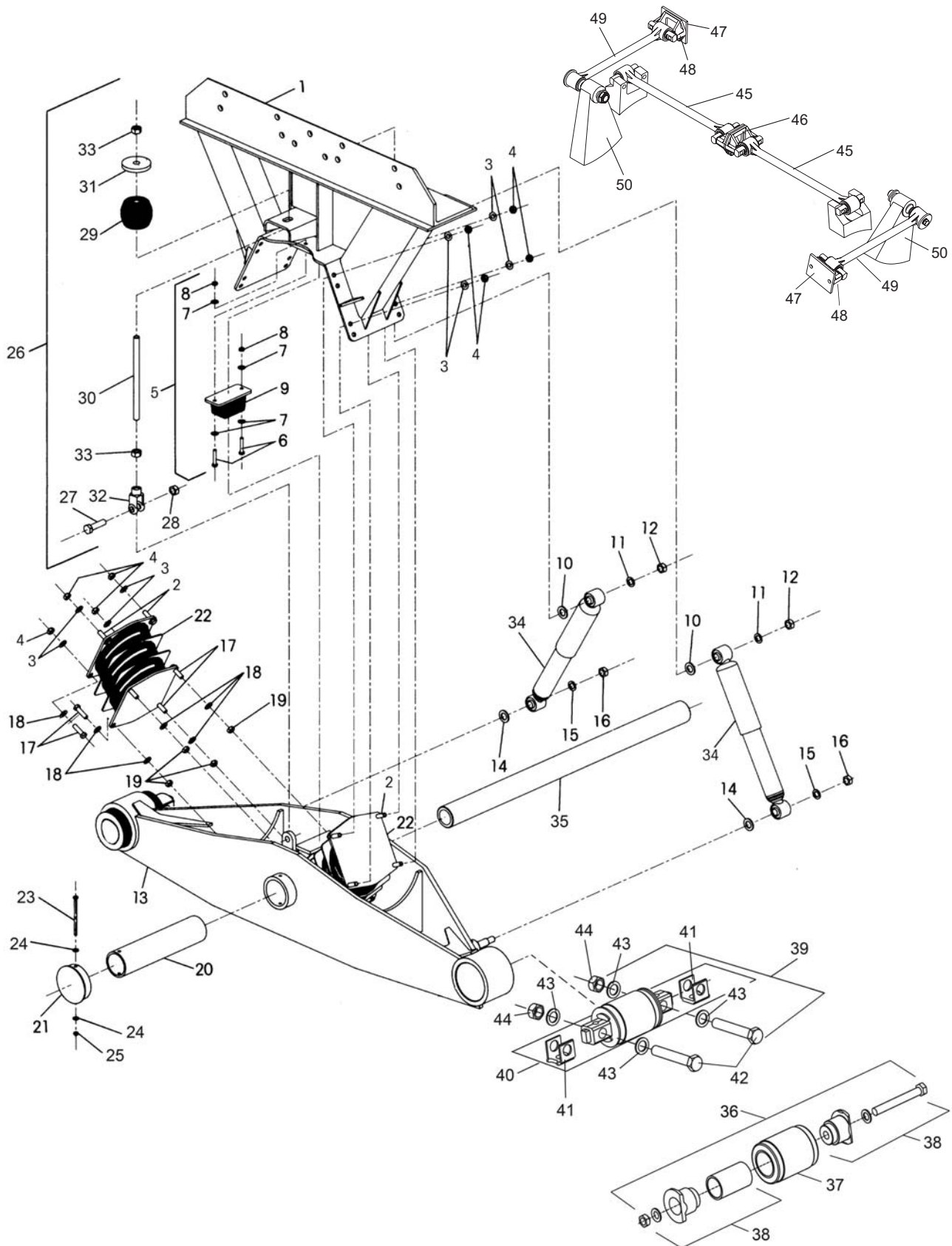
KEY NO.	PART NO.	DESCRIPTION	NO.REQ.
1	58223-	Saddle Assembly Specify Height, Dim. A & Vehicle Name (Includes Key Nos. 2-9)	2
2	22962-014	1/2" Hardened Washer	24
3	22962-027	7/16" Hardened Washer	64
4	24531-018	1/2"-13 UNC 1.75" Bolt	4
5	24531-019	1/2"-13 UNC 2.75" Bolt	8
6	25114-011	7/16"-20-1.25" Bolt	32
7	48949-000	7/16"-20 UNF Locknut	32
8	60879-000L	Bolster Spring	2
9	49846-000	1/2"-13 UNC Locknut	12
10	57461-000	Saddle Vee Bracket	2
11	57787-000	Rebound Control Anchor Plate	2
12	57962-000	Aux. Spring Assembly	2
13	57993-002	Shim Plate	4
14	57993-003	Shim Plate	2
15	58227-XXX	Beam Assembly Specify Length (Includes Key Nos. 16-28)	2
16	22962-001	1/2" Washer—Inner	4
17	22962-004	5/8" Washer—Outer	4
18	30585-000	5/8" Locknut	4
19	22962-028	1/4" Washer	4
20	22962-014	1/2" Hardened Washer	16
21	24531-017	1/2"-13 UNC 2.25" Bolt	4
22	49846-000	1/2"-13 UNC Locknut	4
23	49972-000	Nylon Bushing	2
24	49983-000	1/4"-20 UNC Locknut	2
25	50698-000	1/4"-20 UNC 4.50" Bolt	2
26	56910-000	Center End Cap	2
27	57787-000	Rebound Control Anchor Plate	2
28	57878-003	Rebound Strap	2
	58440-001	Vee Plate Fastener Kit (Includes Key Nos. 29-31)	1
29	50764-006	3/4"-10 UNC-2A Hex Head Bolt	8
30	22962-001	3/4" Washer	16

KEY NO.	PART NO.	DESCRIPTION	NO.REQ.
31	49842-000	3/4"-10 UNC-2B Locknut	8
32	34013-088L	Bar Pin Bushing Kit , Shim Type (Includes Key Nos. 33-37)	4
33	- -	*Bar Pin End Bushing	4
34		Bar Pin Shim	8
	50130-000	.19 / .19	
	50131-000	.25 / .12	
35	48941-000	1"-8 UNC 6" Hexbolt	4
36	22962-008	1" Hardened Washer	8
37	48942-000	1"-8 UNC Locknut	4
38	60218-000	**Torque Rod Assembly	2
39	22186-000	Torque Rod Frame Bracket	2
40	60680-003	Shock Absorber	4
41	44643-011	Cross Tube	1
	42518-	Transverse Rod Kit (Includes Key Nos. 42-45)	1
42	45045-003	Backup Plate	2
43	22186-000	Transverse Rod Frame Bracket	2
44	60215-000	Transverse Rod Assembly	2
45		Transverse Rod Axle Bracket, See 59310-004 for proper axle bracket and Assembly Instructions	2

NOTE: Brackets for drive axles are supplied by the axle manufacturer.
 * Item included in assembly only, part not sold separately.
 ** Hendrickson's part number is stamped on the rod for identification. Be sure and include suffix number when ordering. (This number indicates rod length.) Hendrickson 2-piece ULTRA RODS can also be used to create the desired length. See literature number 45745-149.



11/88-2/96





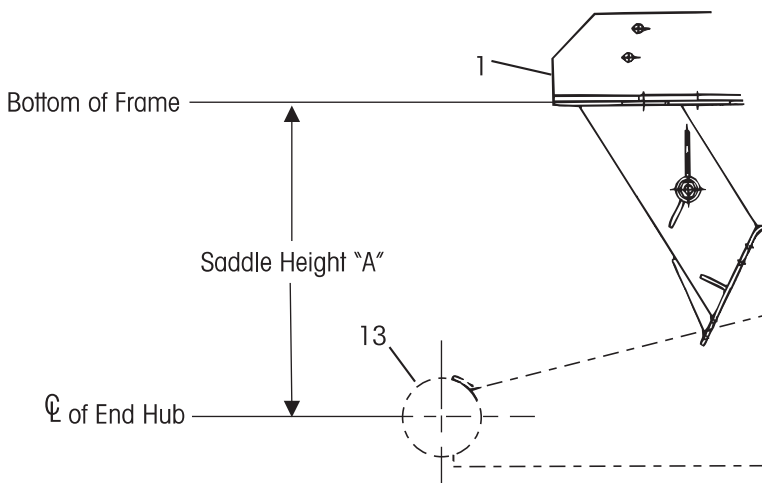
KEY NO.	PART NO.	DESCRIPTION	NO.REQ.
1	50787-	Saddle Assembly Specify Height, Dim. A & Vehicle Name (Includes Key Nos. 2-12)	2
2	25114-011	7/16" Bolt	16
3	22962-027	7/16" Washer	32
4	48949-000	7/16" Locknut	16
5	49399-000	Rebound Rubber Stop Kit (Includes Key Nos. 6-9)	2
6	18160-011	5/16" Bolt	4
7	22962-029	5/16" Washer	8
8	48948-000	5/16" Locknut	4
9	49395-000	Rebound Rubber Stop	2
10	22962-001	3/4" Washer—Inner	4
11	22962-004	5/8" Washer—Outer	4
12	30585-000	5/8" Locknut	4
13	49976-XXX	Beam Assembly Specify Length (Includes Key Nos. 14-33)	2
14	22962-001	3/4" Washer—Inner	4
15	22962-004	5/8" Washer—Outer	4
16	30585-000	5/8" Locknut	4
17	25114-011	7/16" Bolt	16
18	22962-027	7/16" Washer	32
19	48949-000	7/16" Locknut	16
20	49972-000	Nylon Bushing	2
21	56910-000	End Cap	2
22	64718-000	Bolster Spring	2
23	50698-000	1/4" Bolt	2
24	22962-028	1/4" Washer	4
25	49983-000	1/4" Locknut	2
26	49768-000	Rebound Control Kit (Includes Key Nos. 27-33)	2
27	32043-004	5/8" Bolt	2
28	47764-000	5/8" Locknut	2
29	48570-000	Hollow Rubber Spring	2
30	49769-000	Anti-Roll Rod	2
31	49770-000	Threaded Washer	2
32	49771-000	Clevis	2
33	49778-000	5/8" Hex. Nut	4
34	60670-002	Shock Absorber	4

KEY NO.	PART NO.	DESCRIPTION	NO.REQ.
35	44643-011	Cross Tube	1
36		Thru-Bolt Bushing Kit (Includes Key Nos. 37 and 38)	4
	34013-049L	HN-400	
	34013-073L	HN-460	
37	45900-000L	Bushing	4
38		Beam and Adapter Assembly	4
	45000-007L	HN-400	
	21140-034L	HN-460	
39	34013-088L	Bar Pin Bushing Kit, Shim Type (Includes Key Nos. 40 and 41)	4
40	- -	*Bar Pin End Bushing	4
41		Bar Pin Shim	8
	50130-000	.19/.19	
	50131-000	.25/.12	
42	48941-000	1"-8 UNC 6" Hexbolt	4
43	22962-008	1" Hardened Washer	8
44	48942-000	1"-8 UNC Locknut	4
45	60218-000	**Torque Rod Assembly	2
46	22186-000	Torque Rod Frame Bracket	2
	42518-	Transverse Rod Kit (Includes Key Nos. 47-50)	1
47	45045-003	Backup Plate	2
48	22186-000	Transverse Rod Frame Bracket	2
49	60215-000	Transverse Rod Assembly	2
50		Transverse Rod Axle Bracket, See 59310-004 for proper axle bracket and Assembly Instructions	2

NOTE: Brackets for drive axles are supplied by the axle manufacturer.

* Item included in assembly only, part not sold separately.

** Hendrickson's part number is stamped on the rod for identification. Be sure and include suffix number when ordering. (This number indicates rod length.) Hendrickson 2-piece ULTRA RODS can also be used to create the desired length. See literature number 45745-149.



This is a general parts list to provide directional information. Components may vary by mode. For questions, contact Hendrickson Tech Services at 630-910-2800 (email techservices@hendrickson-intl.com).



Information contained in this literature was accurate at the time of publication. Product changes may have been made after the copyright date that are not reflected.

www.hendrickson-intl.com